

Faida Seeds®

Maize Seed Variety FS 650

Farmers, whenever you plant a crop, there is an element of risk. The rain may not fall as you hope, or mother nature may intervene in some other way. As a farmer however, you deserve and can give yourself the best chance of a good crop in choosing wisely on your input and specifically seed requirements!

Faida Seeds research programme is directed at helping farmers achieve their objective by availing to them more hardy cultivars with high yield potential.

The maize seed variety FS 650 has been under research production for 6 years from 1996 to 2002. It was fully released into the market for commercialization by the Min. of Agriculture on Sep. 17, 2002. During the research period and the three years of commercialization, it's production has outperformed that of it's predecessor and widely grown maize seed variety H614D, a favourite of the farming fraternity in the country's maize belt of Trans-zoia & Uasin Gishu. On attaining physiological maturity, the cob **droops** [bends downwards] so that the chances of rain water collecting in the cob & resulting to rotting are reduced. Compared to H614D, the grain size for FS 650 is bigger, heavier & flintier making it excellent for roasting.

Farmers are invited to share in the pride of making an informed decision. This season, buy the highly productive and affordable maize seed, **FS 650!!**

Recommended growing areas:

FS 650 does best in high altitude areas [1700-2200 MASL], where 6 series maize varieties such as HB 614D are grown viz. Eldoret, Kitale, Nakuru, Nyandarua, Kitale, Eldoret, Trans-Nzoia, Uasin-Gishu, Narok, Busia, Bungoma, Lugari, Kakamega, Kisii, Meru, Kirinyaga, Nyeri, Embu, Laikipia, Thika, Kiambu, Muranga, Transmara, Kericho, Bomet, Buret, Webuye, Awendo, etc.

Hybrid characteristics

- ⇒ High yield potential
- ⇒ Flinty grain excellent for roasting
- ⇒ Matures in 5-7 months
- ⇒ Very good standability
- ⇒ Very good cob disease resistance
- ⇒ Drooping cob [reduces risk of rotting and bird damage]
- ⇒ Good husk cover [minimizes rotting by fully covering the cob]
- ⇒ Fast dry-down [reduces cost of drying]
- ⇒ Good maize streak virus, rust & blight resistance
- ⇒ Good yields under stress conditions
- ⇒ Varied altitudes of 1700-2200 metres above sea level.

Spacing

Recommended at 75 cm x 30 cm [plant population of 44,400 plants per hectare] for drier areas or 75 cm x 25 cm [plant population of 53,200 plants per hectare] for wetter areas.

Seed rate of 10 kgs per acre [25 kgs per hectare]. Can be intercropped with beans.

Yield; 100 - 115 bags per Ha [9-10 Metric Tons per Ha] or 40 - 45 bags per acre [*Farmers are reminded that these yields have been realized under standard plots in Farmers Field Schools.*]

Fertilizer application: 50 kgs per acre or 2 teaspoonfuls per hole [*ensure to mix well with soil before dropping the seed into the hole.*]

The effects of plant population on maize



Increases

- Plant height
- Cob height
- Lodging
- Nutrient stress

Decreases

- Stalk thickness
- Cob size
- Grain size

[please see below for our spacing recommendations]

For more information please contact:

Oil Crop Development Limited

Sungura Avenue, Industrial Area P.O. Box 2657 NAKURU 20100

Hybrid Selection

Faida Seeds recognizes that among the most important decisions that a farmer has to make is hybrid selection. This requires time, effort and study. Since we have the farmers' interest at heart, we herewith bring you the most important information that will guide you through the hybrid selection process.

Yield performance of a hybrid maize depends on a number of factors;

The amount and distribution of rainfall, the length of season, altitude and temperature, soil fertility, planting date plant density [population], occurrence of pests and diseases & management

Some of these factors may be mitigated by irrigation or conservation tillage otherwise they are not controllable eg. rainfall and temperature. Other factors can be managed by the farmer, and everything possible should be done to ensure the best conditions are provided for the realisation of yield within the prevailing environment. Hybrid recommendations are based upon the average yield potential of a field.

Altitude and Hybrid Maturity

Altitude has an effect on the number of days from planting to flowering and maturity because the rate of development of maize is affected by temperature. The warmer the weather, the faster is crop development. Higher temperatures at lower altitudes therefore have the effect of accelerating growth. Conversely, the lower prevailing temperatures at higher altitudes retard growth and extend the time taken to reach maturity.

Some important factors to optimum yields with Faida Seeds products.

Timely land preparation: Prepare the land adequately early before the rains start and give the land a fine tilth to ensure easy seed emergence from the ground.

Timely planting: Plant immediately on the onset of the rainy season so that your crop can benefit from early rainfall. This will also help the crop to emerge before the weeds.

NB: To know what your soils require, there is need to establish their composition through soil sampling & analysis [*this service is available at Faida Seeds on request*].

Timely weeding: Weed your crop as early as possible before the weeds get to the fourth leaf stage because weeds population is high and they compete for nutrients with the crop whose population is low.

Topdress your crop at knee height [8-10 leaf stage or 40-45 days after emergence] with the recommended top dresser as per soil analysis of your farm.

Control maize stalk borer by use of appropriate granules such as ambush as soon as you notice any signs of attack. Pymarc is also recommended for stalk borer control.

Harvest your crop at the right time and ensure safe storage viz. keep in a cool, dry and well ventilated place free from any contaminants like chemicals, water and pest attack.

Fumigate your harvested maize with grain dust or actellic super to protect it from attack by weevils.

Storage; It's always advisable to shell your maize for easy storage and pest control.

We at Faida Seeds® would like to invite you to become part of our world and trust that our growth as a Company will be a rewarding experience to you and to your business as a farmer.



Faida Seeds®

Quality seeds for reliable

**FARMERS DESERVE
THE BEST CHANCE!!**

Hybrid Selection

Faida Seeds recognizes that among the most important decisions that a farmer has to make is hybrid selection. This requires time, effort and study. Since we have the farmers' interest at heart, we herewith bring you the most important information that will guide you through the hybrid selection process.

Yield performance of a hybrid maize depends on a number of factors;

The amount and distribution of rainfall, the length of season, altitude and temperature, soil fertility, planting date plant density [population], occurrence of pests and diseases & management

Some of these factors may be mitigated by irrigation or conservation tillage otherwise they are not controllable eg. rainfall and temperature. Other factors can be managed by the farmer, and everything possible should be done to ensure the best conditions are provided for the realisation of yield within the prevailing environment. Hybrid recommendations are based upon the average yield potential of a field.

Altitude and Hybrid Maturity

Altitude has an effect on the number of days from planting to flowering and maturity because the rate of development of maize is affected by temperature. The warmer the weather, the faster is crop development. Higher temperatures at lower altitudes therefore have the effect of accelerating growth. Conversely, the lower prevailing temperatures at higher altitudes retard growth and extend the time taken to reach maturity.

Some important factors to optimum yields with Faida Seeds products.

Timely land preparation: Prepare the land adequately early before the rains start and give the land a fine tilth to ensure easy seed emergence from the ground.

Timely planting: Plant immediately on the onset of the rainy season so that your crop can benefit from early rainfall. This will also help the crop to emerge before the weeds.

NB: To know what your soils require, there is need to establish their composition through soil sampling & analysis [*this service is available at Faida Seeds on request*].

Timely weeding: Weed your crop as early as possible before the weeds get to the fourth leaf stage because weeds population is high and they compete for nutrients with the crop whose population is low.

Topdress your crop at knee height [8-10 leaf stage or 40-45 days after emergence] with the recommended top dresser as per soil analysis of your farm.

Control maize stalk borer by use of appropriate granules such as ambush as soon as you notice any signs of attack. Pymarc is also recommended for stalk borer control.

Harvest your crop at the right time and ensure safe storage viz. keep in a cool, dry and well ventilated place free from any contaminants like chemicals, water and pest attack.

Fumigate your harvested maize with grain dust or actellic super to protect it from attack by weevils.

Storage; It's always advisable to shell your maize for easy storage and pest control.

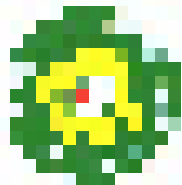
We at Faida Seeds® would like to invite you to become part of our world and trust that our growth as a Company will be a rewarding experience to you and to your business as a farmer.



Faida Seeds®

Quality seeds for reliable

**FARMERS DESERVE
THE BEST CHANCE!!**



Faida Seeds®

Farmers, whenever you plant a crop, there is an element of risk. The rain may not fall as you hope, or mother nature may intervene in some other way. As a farmer however, you deserve and can give yourself the best chance of a good crop in choosing wisely on your input and specifically seed requirements!

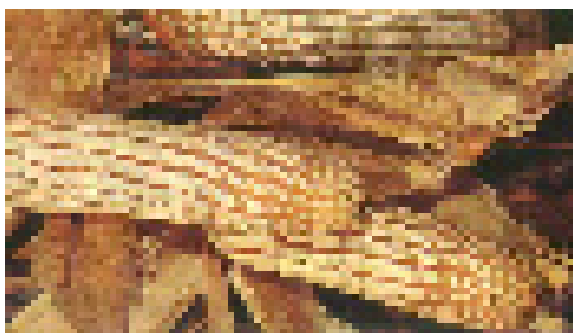
Faida Seeds research programme is directed at helping farmers achieve their objective by availing to them more hardy cultivars with high yield potential.

Recommended growing areas:

Mid Altitude Zones of 1,000 - 1,800 MASL [3,000 - 5,400 Feet Above Sea Level]. KH500-31A does well in areas like Lower Narok, Busia, Bungoma, Vihiga, Nakuru, Kirinyaga, Embu & Kiambu.

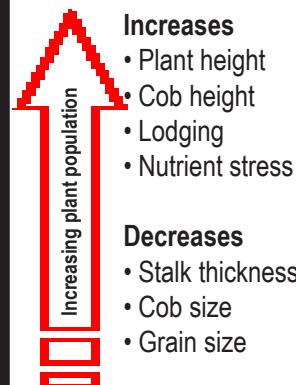
Hybrid characteristics

- ⇒ Highly resistant to Maize Streak Virus & tolerant to Head Smut diseases.
- ⇒ Large attractive cobs that are very sweet for roasting
- ⇒ Matures in 120 - 150 days [4 - 5 months]
- ⇒ Can be intercropped with beans
- ⇒ Excellent drought tolerant
- ⇒ Has strong roots and does not lodge easily.



Maize Seed Variety KH500-31A

The effects of plant



[please see below for our spacing recommendations]

Spacing

Recommended at 75 cm x 30 cm [plant population of 44,400 plants per hectare] for drier areas or 75 cm x 25 cm [plant population of 53,200 plants per hectare] for wetter areas.

Seed rate of 10 kgs per acre [25 kgs per hectare] at a rate of 2 seeds per hole. Can be intercropped with beans.

Yield; Upto 30 bags per acre [2.7 Metric Tons per Acre].

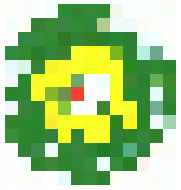
Fertilizer application: 50 kgs per acre or 2 teaspoonfuls per hole *[ensure to mix well with soil before dropping the seed into the hole].*

For more information please contact:

Oil Crop Development Limited

Sungura Avenue, Industrial Area [Opposite Bidco Elianto], P.O. Box 2657 Nakuru 20100

Tel: 0722675842, 0736763398, 051 2212120 / 1 / 2 Fax: 051 2212928



Faida Seeds®

Farmers, whenever you plant a crop, there is an element of risk. The rain may not fall as you hope, or mother nature may intervene in some other way. As a farmer however, you deserve and can give yourself the best chance of a good crop in choosing wisely on your input and specifically seed requirements!

Faida Seeds research programme is directed at helping farmers achieve their objective by availing to them more hardy cultivars with high yield potential.

Recommended growing areas:

Katumani does well in the following areas; Kitui, Machakos, West Pokot, Makueni, Kibwezi, Kajiado, Isiolo, Lower Meru and Embu, Siaya and Kisumu, amongst other areas.

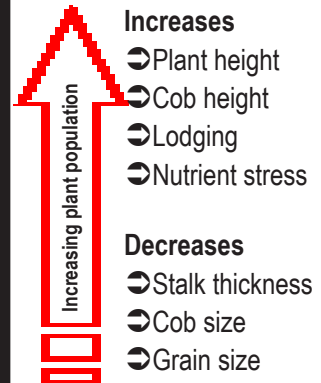
Hybrid characteristics

- ☞ Altitude range [900 - 1350 MASL]
- ☞ Tolerant to most of the leaf and ear diseases
- ☞ Matures in 90 - 120 days [3 - 4 months]
- ☞ Can be intercropped with beans
- ☞ Resistant to lodging and has good husk cover
- ☞ Suitable for marginal lands



Open Pollinated Maize Seed Variety, **KATUMANI**

The effects of plant



[please see below for our spacing recommendations]

Spacing

Recommended at 75 cm x 30 cm [plant population of 44,400 plants per hectare] for drier areas or 75 cm x 25 cm [plant population of 53,200 plants per hectare] for wetter areas.

Seed rate of 10 kgs per acre [25 kgs per hectare] at a rate of 1 seed per hole. Can be intercropped with beans.

Yield; 3 - 5 tons per Ha [13 to 21 bags @ 90 kgs-per acre]

[Farmers are reminded that these yields have been realized under standard plots in Farmers Field Schools].

Fertilizer application: 50 kgs per acre or 2 teaspoonfuls per hole ***[ensure to mix well with soil before dropping the seed into the hole].***

For more information please contact:

Oil Crop Development Limited

Sungura Avenue, Industrial Area P.O. Box 2657 NAKURU 20100